



SEARCH DOG FOUNDATION

Be Part of the Search®

How to Construct a Scent Barrel

MATERIALS LIST FOR 1 BARREL

Two 55 gallon 2-piece poly barrels*

Eight sets of 5/16" x 1/2" carriage bolts, nuts and flat washers

Blue Loctite

3/4" plywood for 21" round lids

Dark tinted acrylic 6'X 112" for lid viewing port

One tube of Alex Plus 10.1 oz. clear acrylic caulk plus silicone

Three metal handles with six 1/8" screws to attach

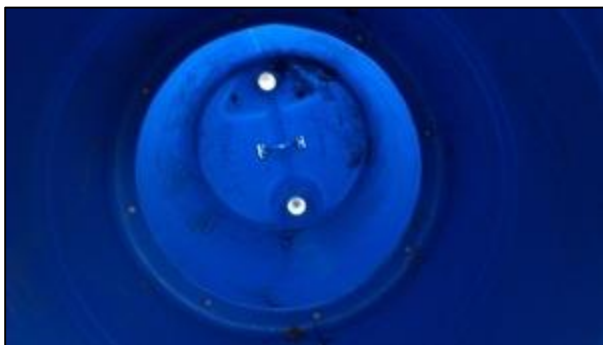
One 3' elastic tie down

* SDF orders reconditioned barrels from the Ted Levine Drum Company in El Monte, CA.

BARREL CONSTRUCTION



Barrel top- Keep that ridge low and clean. You need it though so don't cut it away completely!



Inside -Use jig for bolt pattern and edges. 2 handles for inside bungee and outside carry. Lowes or Home Depot sell the Red Bungee (4')



Barrel outside handle



Lid held in place by bungee. Tinted 5% VLT Limo Black

LID CONSTRUCTION



Barrel Jig



Jig and Protractor



Bolt Pattern



Door -Outside



Door-Inside

The window can be moved below the handler to better gauge closeness of the dog. We used the darkest (90%) Window tint.